

1. Vocabulary: English
The league: away

Example: When a team has an **away** match, they travel to their opponents stadium. If a team is playing **away**, they have more of a challenge.



2. Vocabulary: English
The league: champions

Example: The team that wins the league are called the **champions**.



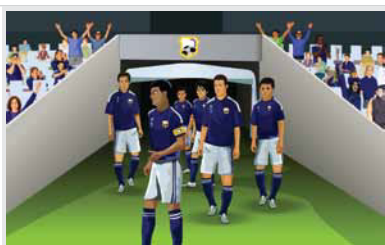
3. Vocabulary: English
The league: fixtures

Example: When the matches for a competition are arranged and the dates are set or fixed, they are called **fixtures**.



4. Vocabulary: English
The league: home

Example: When a team is playing at **home**, it means that the match is in their own stadium. When a team is playing at **home**, they have an advantage because more of their fans can watch.



5. Vocabulary: English
The league: league table

Example: The **league table** shows the position of all of the teams in the league, based on the number of points they have won in the competition so far.



6. Vocabulary: English
The league: promotion

Example: **Promotion** is when teams move from one league to a higher tier. The top clubs in a league can move up to a higher league. The Premier League is the highest level.

2011-12 Football League Championship - League table

Po.	Team	Pld	W	D	L	Pts	Qualification or relegation
1	Reading (C) (P)	13	12	1	0	37	Promotion - 2012-13 Premier League
2	Southampton (P)	13	11	2	0	35	Premier League
3	West Ham United	13	9	2	2	29	Promotion - 2012-13 Premier League
4	Sheff Wednesday	13	8	1	4	25	Promotion - 2012-13 Premier League
5	Blackpool	13	7	1	5	22	Promotion - 2012-13 Premier League
6	Cardiff City	13	6	1	6	19	Promotion - 2012-13 Premier League
7	Middlesbrough	13	5	2	6	17	Promotion - 2012-13 Premier League
8	Hull City	13	4	5	4	17	Promotion - 2012-13 Premier League
22	Portsmouth (R)	13	1	3	9	6	Relegation - 2012-13 League One
23	Coventry City (R)	13	2	0	11	6	Relegation - 2012-13 League One
24	Doncaster Rovers (R)	13	0	1	12	1	Relegation - 2012-13 League One

7. Vocabulary: English
The league: relegation

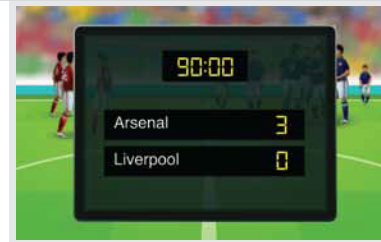
Example: **Relegation** is when the clubs that finish the season at the bottom of the league table move to a lower tier league.

2011-12 Football League Championship - League table

Po.	Team	Pld	W	D	L	Pts	Qualification or relegation
1	Reading (C) (P)	13	12	1	0	37	Promotion - 2012-13 Premier League
2	Southampton (P)	13	11	2	0	35	Premier League
3	West Ham United	13	9	2	2	29	Promotion - 2012-13 Premier League
4	Sheff Wednesday	13	8	1	4	25	Promotion - 2012-13 Premier League
5	Blackpool	13	7	1	5	22	Promotion - 2012-13 Premier League
6	Cardiff City	13	6	1	6	19	Promotion - 2012-13 Premier League
7	Middlesbrough	13	5	2	6	17	Promotion - 2012-13 Premier League
8	Hull City	13	4	5	4	17	Promotion - 2012-13 Premier League
22	Portsmouth (R)	13	1	3	9	6	Relegation - 2012-13 League One
23	Coventry City (R)	13	2	0	11	6	Relegation - 2012-13 League One
24	Doncaster Rovers (R)	13	0	1	12	1	Relegation - 2012-13 League One

8. Vocabulary: English
The league: result

Example: The **result** is the final score at the end of a match.



9. Vocabulary: English
The league: three points

Example: If a team wins a match, they score **three points**. The points determine their position in the league table.

90:00

	Goals	Points
England	1	3
Italy	0	0

10. Vocabulary: English
The league: underdogs

Example: The **underdogs** are the team that people think will lose. When a small team plays a club at the top of the league, the small club will be the **underdogs**.

